

# Alfred Basbous: Figurative to Abstraction – Part 2 | My Art Guides

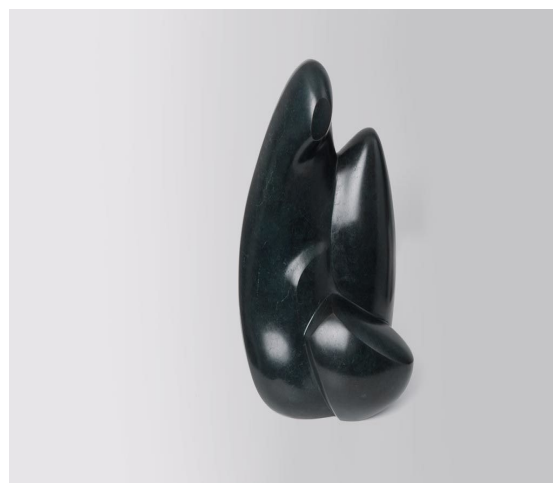
A two part exhibition of selected studies, drawings and works by the late **Alfred Basbous**.

Basbous's works express a lifelong exploration of the human form and its abstract properties. Focused on the aesthetic principles of shape, movement, line and material, his sculptures display a deeply ingrained sincerity and a search for the essence of beauty. Working in the tradition of sculptors such as Auguste Rodin, Jean Arp and Henry Moore, Alfred Basbous explores the potential of noble materials such as bronze, wood and marble to express the sensuality and purity of the human form. This aversion towards frivolous and meaningless embellishments echoes his own philosophy of simplicity and earnestness.

The works of Alfred Basbous are part of numerous public and private collections throughout the world, including the Ashmolean Museum in Oxford and the Musée Rodin in Paris. His monumental works are present in the public areas of Beirut and many Lebanese cities.



*Alfred Basbous, Taureau, 2003.*



*Alfred Basbous, Figurative to Abstraction.*