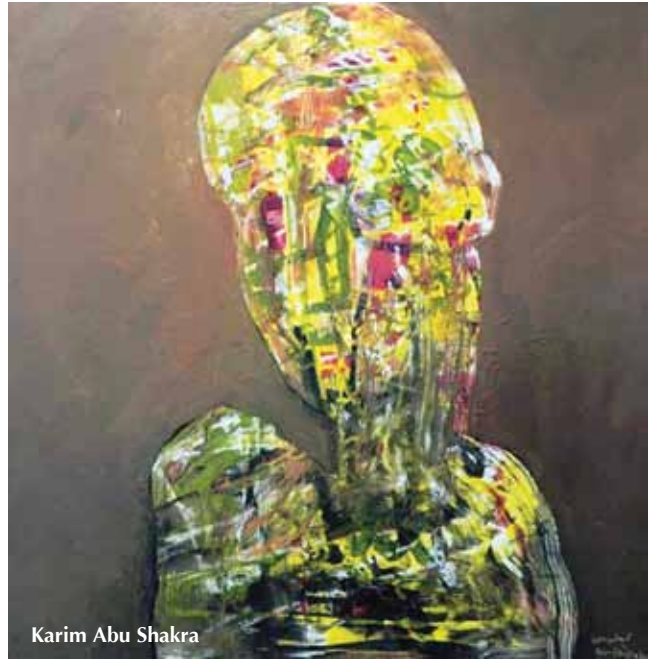


# “BOND”

*“To Palestinians, identity is deeply rooted in their land like resilient roots are bonded to their tree.” Rula Alami*



Karim Abu Shakra



Karim Abu Shakra



Karim Abu Shakra

**T**he works of Palestinian artists Fouad Agbaria and Karim Abu Shakra reveal a shared vision of a bond and belonging to the land. Their paintings embody psychological, social and political states whereby man transcends reality moving towards a sacred imaginary realm.

Overall, Abu Shakra’s works are characterized by his bold brush strokes and nearly naive style. His paintings focus on the cactus as a symbol of resilience and a deeply rooted attachment to the land. His abstract human busts are painted in vibrant mixtures of color, reflecting man’s complexity and his desire to transcend this reality.

In Agbaria’s works there is an attempt to retrieve visual memories that are tied to the land; vague childhood scenes painted in a yellow ochre color reflecting light and hope, trying to reclaim the light of childhood from mountains and fields in the countryside. There is a visible attempt to extract the climax of the moment, live it and dream it.



Karim Abu Shakra





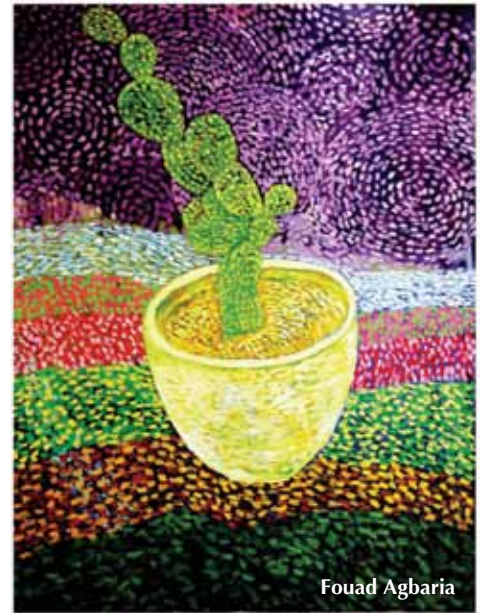
Fouad Agbaria



Fouad Agbaria



Fouad Agbaria



Fouad Agbaria



Fouad Agbaria

He intensely packs together the leaves of the cacti, relating them to the philosophical perspective of the land - depicting the strong plant in an impressionist style. Historically, cacti have been planted as borders for protection around plots of land and houses. That function, however, has transcended the plant, making it a sacred icon. The resilient sturdy plant has been transformed into a symbol for memories, whereby time has stopped blocking the road for forgetfulness. It is a tactile testimony of a memory of a precious place, an assertion of belonging and identity.

The process of depicting a concrete presence through visual art is tied to the past, and attempts to develop a new vision for the future, echoing an unbreakable eternal fusion between man and his land.

The exhibition runs from May 10 to May 31 at Orient Gallery and is in collaboration with Rula Alami who is passionate about art. Her attachment to Middle Eastern cultures led her to develop a rich knowledge of Middle Eastern art, organizing exhibitions throughout the region. ■