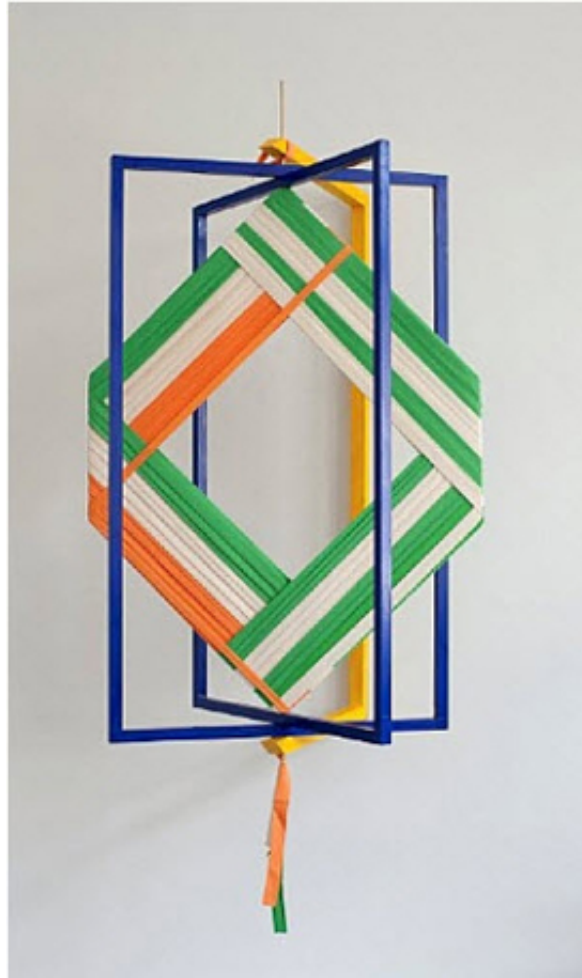
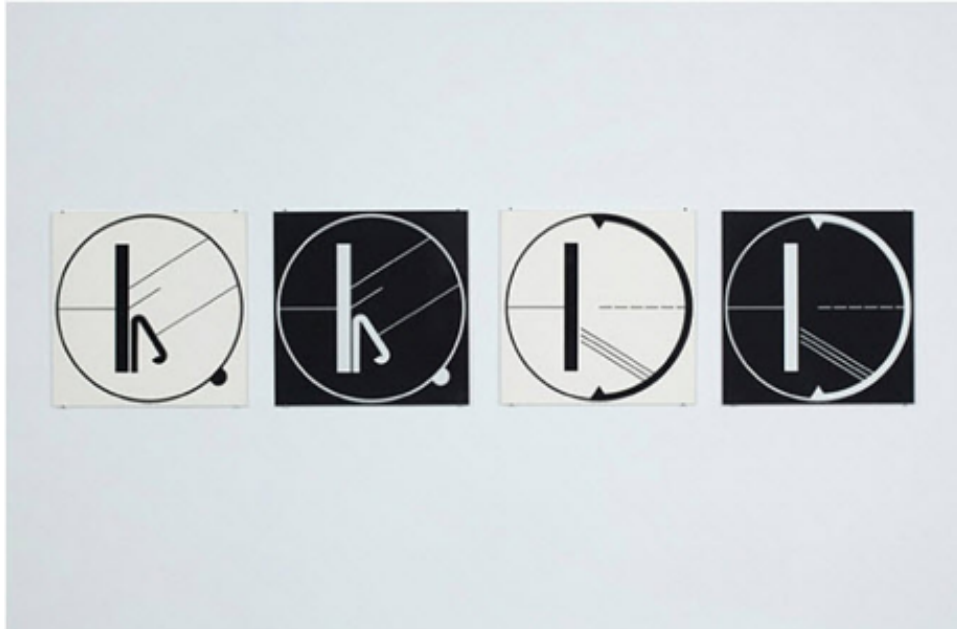


Spotlight on Art Basel 2013

Art Basel, the summer's art destination, will take place in Switzerland from June 13 to 16, 2013.

[Katie Harrell](#), June 11, 2013





Manfred Mohr, *Untitled (2x2 serigraphy set)*, 1968, bitforms gallery, New York, NY

[Art Basel](#), the art world's summer destination since 1970, will take place in Halls 1 and 2 of Messe Basel, in Messeplatz, Basel, Switzerland, from June 13 to 16, 2013. The fair's 44th edition boasts over 300 participating galleries, who will show works by over 4,000 Contemporary, Modern, and emerging artists. The tens of thousands of visitors from around the world who flock to the picturesque Swiss city will not only be able to enjoy impressive works in every imaginable medium, but will also be able to experience the diverse artistic offerings of Basel.



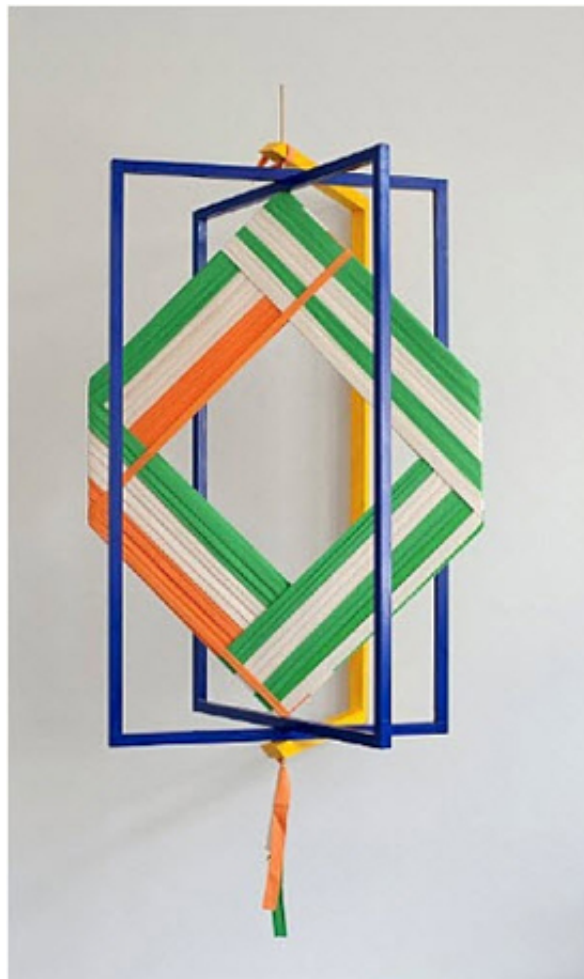
Barbara Kruger, *Made For You*, 2013, Sprüth Magers Berlin London, Berlin, Germany

The largest sector of the fair will showcase 230 of the world's leading galleries displaying high-caliber Modern and Contemporary pieces. Participating galleries include Jörg Maass Kunsthandel (Berlin, Germany), who will display a survey of German Expressionists, and Lehmann Maupin (New York, NY), who will exhibit a selection of Contemporary pieces from gallery artists.



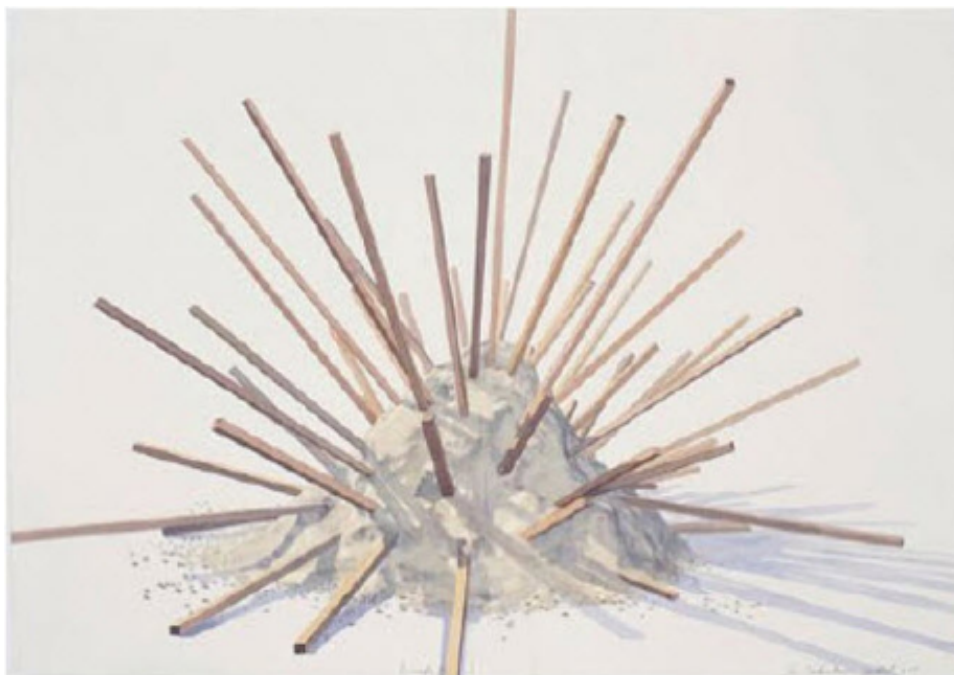
Thomas Demand, *Kinderzimmer / Nursery*, 2011, PKM Gallery, London, UK

The Feature sector of the show will spotlight a smaller number of galleries exhibiting solo artist presentations or specially curated booths that focus on specific thematic elements. For example, bitforms' (New York, NY) booth will present a survey of works by [Manfred Mohr](#) (German, b.1938), one of the forerunners of digital art.



Jenni Tischer, *Emblem (Figure of Three)*, 2013, Krobath, Vienna, Austria

If you are looking for artists on the cutting-edge of the emerging art scene, be sure to check out the Statements sector, which will feature solo projects by young artists. Each year, two artists from Statements are the recipients of the Baloise Art Prize. The winning artists will have pieces acquired by the Baloise Group, which will then be donated to important European art institutions.



Los Carpinteros, *Peinado II*, 2013, Galerie Peter Kilchmann, Zurich, Switzerland

Collectors interested in prints and multiples should stop by the Edition sector to see booths that will feature presentations of editioned works by galleries specializing in multiples.

A more interactive art experience can be had at either the Unlimited or Parcours sectors. The Unlimited sector, curated by Gianni Jetzer, will feature pieces by artists such as [Sean Scully](#) (American/Irish, b.1945), [Antony Gormley](#) (British, b.1950), and [Carl Andre](#) (American, b.1935) that are too large to be presented in a traditional art fair booth. The Parcours sector, curated by Florence Derieux, will expand the walls of the fair into the city, and will include site-specific works and performances throughout Basel's Klingental neighborhood. Parcours will

be open to the public for the duration of the fair.

Throughout the week, Art Basel will also feature a program of films, booths boasting selections from a variety of international art publications, and both morning and afternoon lecture series covering a wide breadth of art topics.

Participating *artnet* Galleries Members:

303 Gallery

[Acquavella Galleries](#)

[Alexander and Bonin](#)

Almine Rech Gallery

[Andrea Rosen Gallery](#)

[Annely Juda Fine Art](#)

[Annet Gelink Gallery](#)

[Anthony Meier Fine Arts](#)

[Anthony Reynolds Gallery](#)

[Anton Kern Gallery](#)

[Aurel Scheibler](#)

[Barbara Mathes Gallery](#)

Beijing Commune

[Bernard Jacobson Gallery](#)

[Bernier/Eliades Gallery](#)

[bitforms gallery](#)

[Bortolami](#)

[Brooke Alexander Editions](#)

[Bruce Silverstein](#)

[Buchmann Galerie](#)

[Carolina Nitsch Contemporary Art](#)

[Cheim & Read](#)

[Chemould Prescott Road](#)

[Contemporary Fine Arts](#)

[Crown Point Press](#)

David Nolan Gallery

[David Zwirner](#)

[Dirimart](#)

[Edward Tyler Nahem](#)

[Edwynn Houk Gallery](#)

[Esther Schipper](#)

[Fraenkel Gallery](#)

[Galería Elvira González](#)

[Galeria Fortes VilaÃ§a](#)

[Galeria Luisa Strina](#)

[Galerie Barbara Weiss](#)

[Galerie Bob van Orsouw](#)

[Galerie Buchholz](#)

[Galerie Chantal Crousel](#)

[Galerie Daniel Templon](#)

[Galerie Eva Presenhuber](#)

Galerie Gebr. Lehmann

[Galerie Gmurzynska](#)

[Galerie Greta Meert](#)

[Galerie Hans Mayer](#)

[Galerie Hopkins](#)

[Galerie Karsten Greve AG](#)

[Galerie Klüser](#)

[Galerie Krinzinger](#)

[Galerie Lelong](#)

[Galerie m Bochum](#)

[Galerie Max Hetzler](#)

[Galerie Michael Haas](#)

[Galerie naechst St. Stephan](#)

[Galerie Nelson – Freeman](#)

Galerie Peter Kilchmann

[Galerie Rüdiger Schöttle](#)

[Galerie St. Etienne](#)

[Galerie Thaddaeus Ropac](#)

[Galerie Thomas](#)

[Galerie Thomas Schulte](#)

[Galerie Thomas Zander](#)

Galerie Tschudi

[Galerie Urs Meile, Beijing-Lucerne](#)

[Galerie Vera Munro](#)

[Galerie von Bartha](#)

[Galleria dello Scudo](#)

[Galleria Tega](#)

[Gavin Brown's enterprise](#)

[Gemini G.E.L.](#)

[Gladstone Gallery](#)

[Hauser & Wirth](#)

[Hazlitt Holland-Hibbert](#)

[Howard Greenberg Gallery](#)

[Jablonka Galerie](#)

[Jörg Maass Kunsthandel](#)

[Galerie Kamel Mennour](#)

[Kewenig Galerie](#)

[Konrad Fischer Galerie](#)

[Krobath](#)

[Kukje Gallery](#)

[Lehmann Maupin](#)

[Leo Castelli](#)

[Lisson Gallery](#)

[Luhring Augustine](#)

[Mai 36 Galerie](#)

[Marian Goodman Gallery](#)

[Marianne Boesky Gallery](#)

[Marlborough Fine Art](#)

[Matthew Marks Gallery](#)

[Maureen Paley](#)

[Galerie Michael Werner](#)

[Mitchell-Innes & Nash](#)

[Mnuchin Gallery](#)

[Moeller New York + Berlin](#)

Murray Guy

[New Art Centre](#)

Niels Borch Jensen Gallery

[The Pace Gallery](#)

[The Paragon Press](#)

[Paula Cooper Gallery](#)

[Peter Blum](#)

[PKM Gallery](#)

[Regen Projects](#)

[Richard Gray Gallery](#)

[Richard L. Feigen & Co.](#)

[Richard Nagy Ltd.](#)

[Sabine Knust Galerie Maximilian Verlag](#)

[SCAI The Bathhouse/Shiraishi Contemporary Art Inc.](#)

[Sean Kelly Gallery](#)

[Sfeir-Semler](#)

[Sies + Höke](#)

[Sikkema Jenkins & Co](#)

[Simon Lee](#)

[Skarstedt Gallery](#)

Sperone Westwater

[Sprüth Magers Berlin London](#)

Stephen Friedman Gallery

[STPI Singapore Tyler Print Institute](#)

[Tanya Bonakdar Gallery](#)

[The Mayor Gallery](#)

[Thomas Ammann Fine Art AG](#)

[Tilton Gallery](#)

[Timothy Taylor Gallery](#)

[Two Palms](#)

[Victoria Miro Gallery](#)

[Waddington Custot Galleries](#)

[Washburn Gallery](#)

[White Cube](#)

[Xavier Hufkens](#)

[Yvon Lambert](#)

Follow [artnet News](#) on Facebook:

[Want to stay ahead of the art world? Subscribe to our newsletter to get the breaking news, eye-opening interviews, and incisive critical takes that drive the conversation forward.](#)

Article topics