

# GALERIE HELENE LAMARQUE Press Releases

## Abderrazak Sahli

- > Exhibition **APRIL 18 - MAY 14, 2008** | Catalog
- > Opening: **Thursday, April 17, 2008, 6:00-8:00 P.M.**

Galerie Hélène Lamarque is pleased to announce an exhibition of works by the Tunisian artist Abderrazak Sahli. This exhibition will be the artist's first solo show at the gallery.

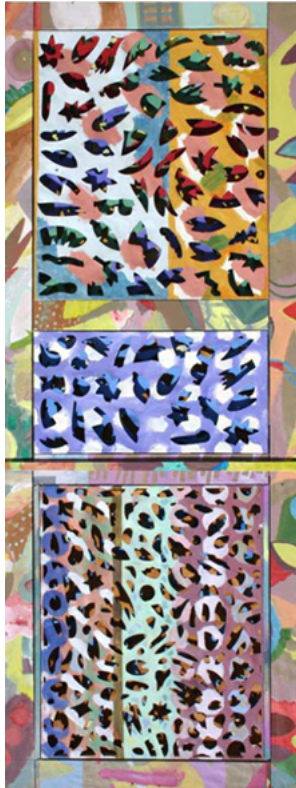
In Sahli's large, brightly-colored works of paper he invokes traditional, historic forms, assembled in seemingly random patterns and cut into the paper. Questioning the relationship between empty space and the structure that supports it, the artist here explores the relevance of the French artistic group founded in the 1960s, *Supports/Surfaces*. The *support* is an integral component of Sahli's work. Floating papers, cut-out doors and columns of paper punctuate the space.

Similar repetition of forms reoccurs in the artist's works on canvas. The large paintings, as the cut-out works, evoke Arabic Mashrabiya screens, as well as Carthaginian mosaics. In so doing, he binds an international artistic form with his own local, archetypal culture.

Also presented at the exhibition will be an installation of the artist's *sakhanes*. Familiar objects from Sahli's childhood in Tunisia, these objects – originally used as sources of heat – represent for him a typical part of traditional Tunisian culture. The artist here uses these rather quotidian objects as artistic supports as he covers them in jute and paints his mosaic motifs in acrylic upon their surfaces. Their multiplication creates a synergy of space, light and color. Presented as an ensemble, the works form a veritable "flock" of painted structures; Sahli has likened the artist surrounded by these works to "a shepherd in the middle of his sheep."

The artist lives and works in Hammamet, Tunisia, where he was born in 1941. After his studies at l'Ecole des Beaux Arts de Tunis, he worked and studied in Paris during the 1980s. His work has been the subject of numerous exhibitions in museums and galleries in Europe, Asia, Dubai and his native Tunisia. His oeuvre is represented in the collection of l'Institut du Monde Arabe in Paris.

A monographic catalogue will be available with essays by critic and art historian Deborah Jenner and professors of art history Anne Kerdraon and Deepak Ananth.



*La porte*  
Courtesy Galerie Hélène Lamarque



*Sakhanes*  
Courtesy Galerie Hélène Lamarque



*Sans titre*  
Courtesy Galerie Hélène Lamarque

EXHIBITION **CATALOG**

GALERIE  
HELENE  
LAMARQUE

Abderrazak  
**SAHLI**

**The exhibition will be on view at Galerie Hélène Lamarque from April 18 to May 14, 2008.  
The gallery is open Tuesday through Saturday, from 2:30 to 7:00 P.M.**

**Press Contact:** Chadd Kortge  
Tél: +33 1 42 78 01 91  
Fax: +33 1 42 76 00 69  
Email: [info@galeriehelenelamarque.com](mailto:info@galeriehelenelamarque.com)

Galerie Hélène Lamarque, 37 rue Vaneau, 75007, Paris  
[www.galeriehelenelamarque.com](http://www.galeriehelenelamarque.com)

---

**TÉLÉCHARGEMENT**

(Cliquez sur l'icone pour le téléchargement)

Catalogue | Taille du fichier PDF : 1.2 Mo

